

3404 8 Avenue #3, Calgary T3C 2Z7

MLS® #: **A2137389** Area: **Spruce Cliff** Listing Date: **06/01/24** List Price: **\$735,900**
 Status: **Active** County: **Calgary** Change: **None** Association: **Fort McMurray**



General Information

Prop Type: **Residential**
 Sub Type: **Row/Townhouse**
 City/Town: **Calgary**
 Year Built: **2024**

Finished Floor Area
 Abv Sqft: **1,665**
 Low Sqft:
 Ttl Sqft: **1,665**

DOM

27
Layout
 Beds: **3 (3)**
 Baths: **2.5 (2 1)**
 Style: **3 Storey**

Lot Information

Lot Sz Ar:
 Lot Shape:

Parking

Ttl Park: **1**
 Garage Sz: **1**

Access:

Lot Feat: **Corner Lot,Low Maintenance Landscape,Rectangular Lot**
 Park Feat: **Single Garage Attached**

Utilities and Features

Roof: **Flat Torch Membrane**
 Heating: **Forced Air,Natural Gas**
 Sewer:
 Ext Feat: **BBQ gas line**

Construction: **Aluminum Siding ,Cement Fiber Board,Stucco,Wood Frame**
 Flooring: **Carpet,Vinyl Plank**
 Water Source:
 Fnd/Bsmt: **Poured Concrete**

Kitchen Appl: **Built-In Oven,Dishwasher,Garage Control(s),Gas Cooktop,Microwave,Range Hood,Refrigerator**
 Int Feat: **No Animal Home,No Smoking Home,Quartz Counters**
 Utilities:

Room Information

Room	Level	Dimensions
Living Room	Second	14`1" x 12`0"
Dining Room	Second	11`10" x 8`1"
Bedroom	Third	11`9" x 9`11"
Bedroom	Main	9`10" x 8`2"
4pc Bathroom	Third	
Balcony	Level 4	30`4" x 14`1"

Room	Level	Dimensions
Kitchen	Second	15`3" x 10`11"
Bedroom - Primary	Third	11`9" x 11`5"
Laundry	Third	3`2" x 3`1"
2pc Bathroom	Second	
4pc Ensuite bath	Third	

Legal/Tax/Financial

Condo Fee: Title: Zoning:

\$240

Fee Simple

TBV

Fee Freq:

Monthly

Legal Desc:

TBV

Remarks

Pub Rmks:

***SHOW SUITE NOW OPEN!* The perfect balance of inner-city, luxury living to match your on-the-go, outdoor lifestyle! These upgraded, spacious, and modern SPRUCE CLIFF MEWS TOWNHOMES are the perfect option for your family, with prices starting at \$699,900! Located on the corner of Spruce Drive SW, two blocks up from Bow Trail and across from Shaganappi Point Golf Course, it couldn't be better suited to an active, metropolitan lifestyle. Enjoy golf course and DOWNTOWN VIEWS, but the open space doesn't end there! Your neighbour to the north is the Spruce Cliff Community Association! There's a playground, arts centre, basketball courts, lawn bowling, and open field. Just past the assoc. is a local shopping centre with everyone's favourite Pie Junkie, a barber shop, a bakery, a pub, and more! Head south, and all the amenities, shopping, and restaurants you could need are within walking distance, including the Westbrook Mall, Westbrook C-Train Station and Library, local dining options along 17th Ave SW, and more as you travel along 17th Ave or 37th Street! Commute downtown in just 10 minutes, or hop on the train for stress-free morning travel. Spend lots of time outdoors all year round, with walking access to the Douglas Fir Trail, Edworthy Park, and the entire Bow River Pathway system! There are many playgrounds for little ones and easy access out of town following Bow Trail to Sarcee. Back home in your new townhome, you have THREE FLOORPLANS in varying price ranges! Each floorplan is loaded with the modern luxuries you want and expect from a new build, with quality finishes and craftsmanship alongside luxury upgrades. All floorplans feature an incredible ROOFTOP PATIO with East and West exposure and built-in planter boxes, a mix of luxury vinyl plank flooring and luxury carpet, 2 upper bedrooms with a third on the main floor that can also be used as a home office or flex space, and a secure, attached oversized single car garage. The gourmet kitchens are finished with upgraded custom cabinetry with under cabinet lighting and soft-close hardware, quartz countertops, central islands with waterfall edges, and a Whirlpool stainless steel appliance package complete with a French door refrigerator, gas cooktop, wall oven and microwave, and dishwasher. Each home also features a kitchen balcony, complete with a gas line for a BBQ! Enjoy family meals and entertaining in the full-size dining room, and lounge comfortably in the spacious living room with a contemporary electric fireplace with tile surround! Two bedrooms, including the primary with a private 4-pc ensuite, are found on the third floor with a laundry closet and modern bathroom finishes. Don't miss your opportunity for the ultimate live, work, and play lifestyle in these upcoming luxury townhomes! Be sure to view the floorplans, specs, and brochure for an immersive look into your family's new home today! *Renderings are for inspiration purposes only; actual finishes and selections may vary. Photos are of the show suite.**

Inclusions:

N/A

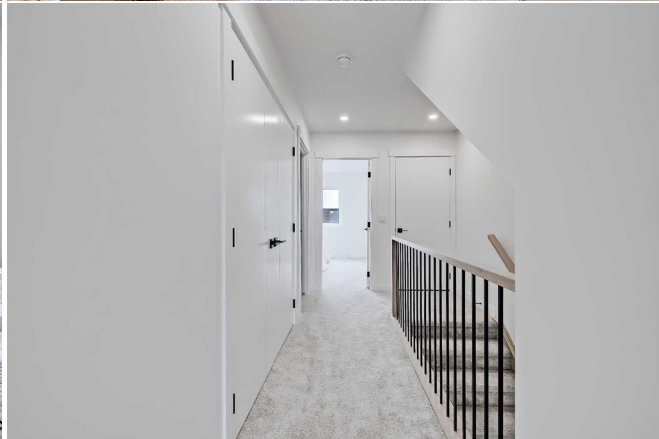
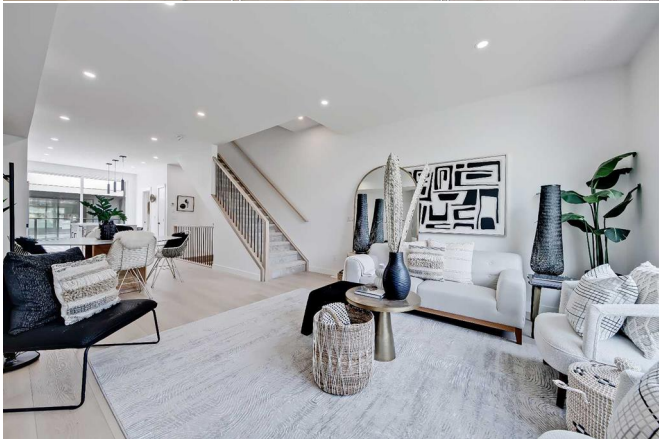
Property Listed By:

RE/MAX House of Real Estate

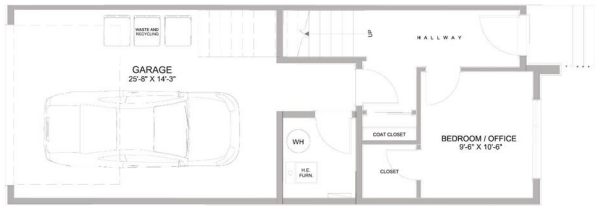
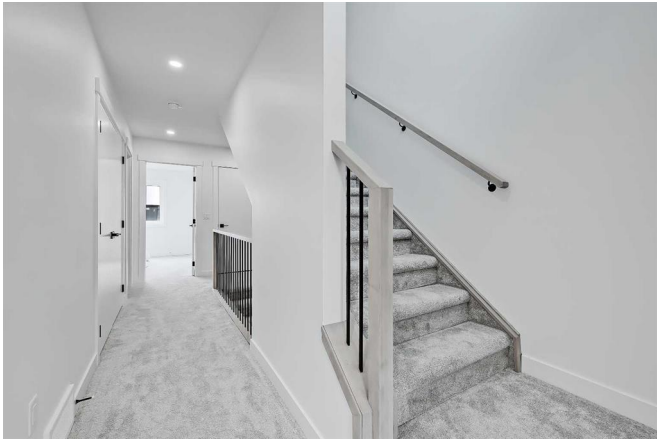
TO VIEW THIS PROPERTY WITH AN A-TEAM BUYER'S AGENT PLEASE CONTACT (587) 700-7123



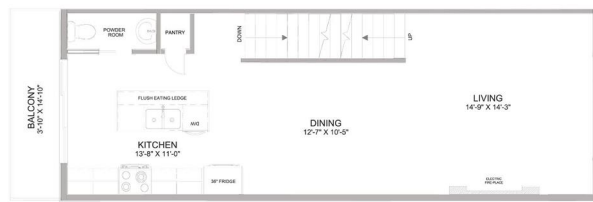




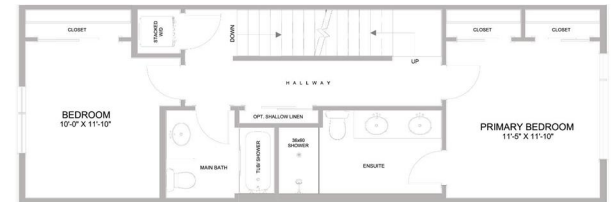




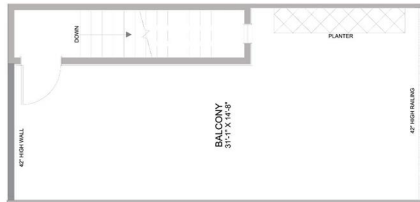
FLOORPLAN B | FIRST FLOOR



FLOORPLAN B | SECOND FLOOR



FLOORPLAN B | THIRD FLOOR



FLOORPLAN B | FOURTH FLOOR

